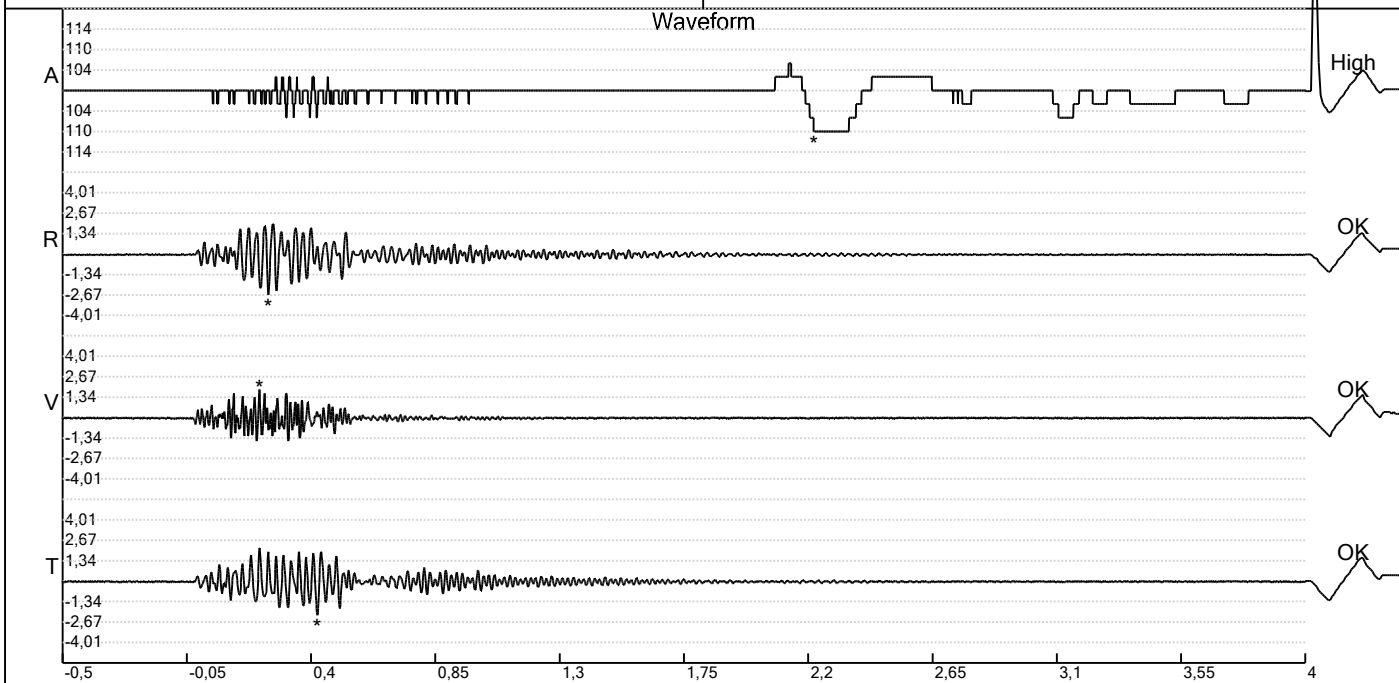


Carrière de BRS
 Aywaille -6
 Tir du 08/07/2025
 Sismographe placé au
 261 Halleux
 4710 Comblain-au-Pont

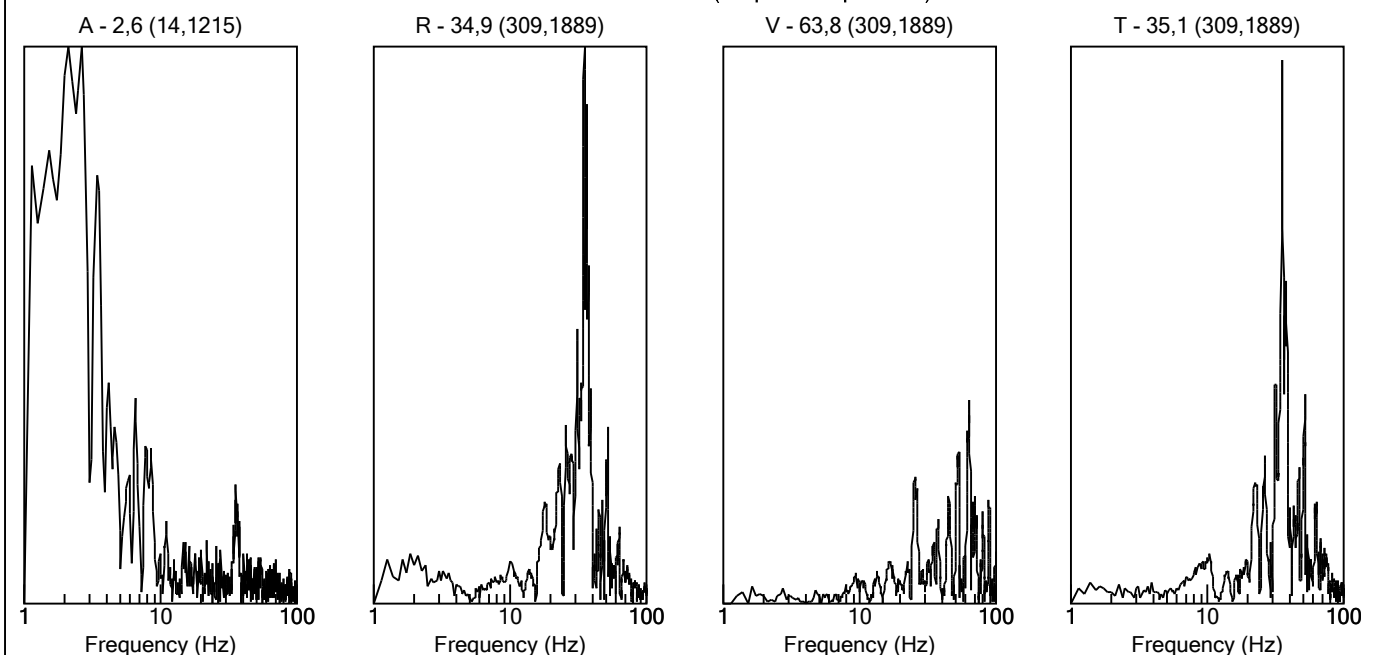
Record: 1789202507081301119.dtb
 Number: 119
 Seismograph: Mini-Seis 1789
 Type of Record: Waveform
 Date: 08-07-25 13:01:00
 Duration: 4,50 Seconds
 Sample Rate: 1024
 Pre-Trigger: 0,5 Seconds
 Seismic Trigger: 0,508 mm/s
 Acoustic Trigger: 142,1 dB
 Seismic Gain: 63,5
 Acoustic Gain: 141,9 dB
 Voltage: 6,6

Peaks and Frequencies
 PPV Maximum (Geo #1): 2,67 mm/s
 Acoustic #1: 109,5 dB @ 2,6 Hz (2,219727 s)
 Radial #1: 2,67 mm/s @ 39,3 Hz (0,2451172 s)
 Vertical #1: 1,84 mm/s @ 56,8 Hz (0,2128906 s)
 Transverse #1: 2,22 mm/s @ 32,0 Hz (0,4228516 s)
 Last Calibration Date:

Graph Information
 Time Range: -0,499 s to 4 s, Intervals: 0,4499 Seconds



Fast Fourier Transform (Amplitude Spectrum)



Carrière de BRS
 Aywaille -6
 Tir du 08/07/2025
 Sismographe placé au
 261 Halleux
 4710 Comblain-au-Pont

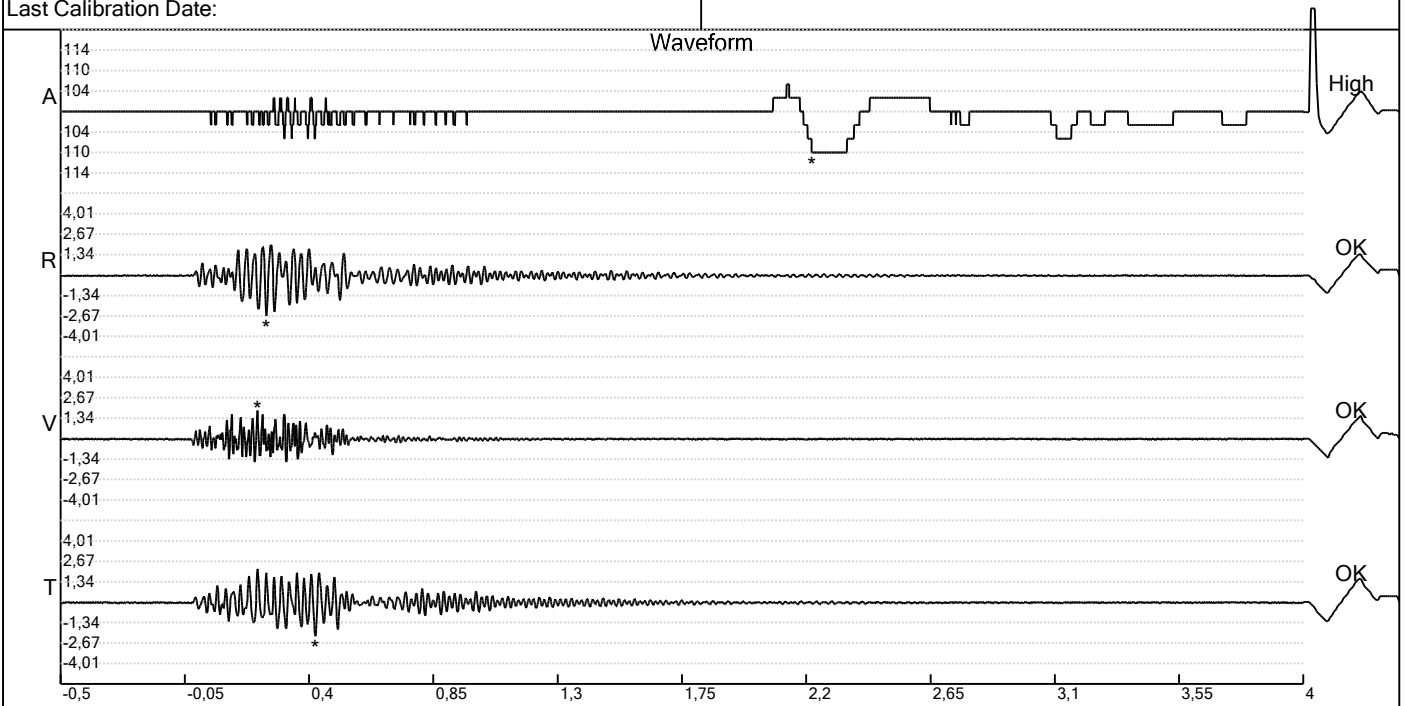
Record: 1789202507081301119.dtb
 Number: 119
 Seismograph: Mini-Seis 1789
 Type of Record: Waveform
 Date: 08-07-25 13:01:00
 Duration: 4,50 Seconds
 Sample Rate: 1024
 Pre-Trigger: 0,5 Seconds
 Seismic Trigger: 0,508 mm/s
 Acoustic Trigger: 142,1 dB
 Seismic Gain: 63,5
 Acoustic Gain: 141,9 dB
 Voltage: 6,6

Peaks and Frequencies

PPV Maximum (Geo #1): 2,67 mm/s
 Acoustic #1: 109,5 dB @ 2,6 Hz (2,219727 s)
 Radial #1: 2,67 mm/s @ 39,3 Hz (0,2451172 s)
 Vertical #1: 1,84 mm/s @ 56,8 Hz (0,2128906 s)
 Transverse #1: 2,22 mm/s @ 32,0 Hz (0,4228516 s)
 Last Calibration Date:

Graph Information

Time Range: -0,499 s to 4 s, Intervals: 0,4499 Seconds



Velocity vs. Frequency (DIN 4150-3 Tab 1)

